

Marine Mobile Digital Gauges

for Suzuki engines

USER MANUAL
V1.06 – May 2020

by www.mobilegauges.com

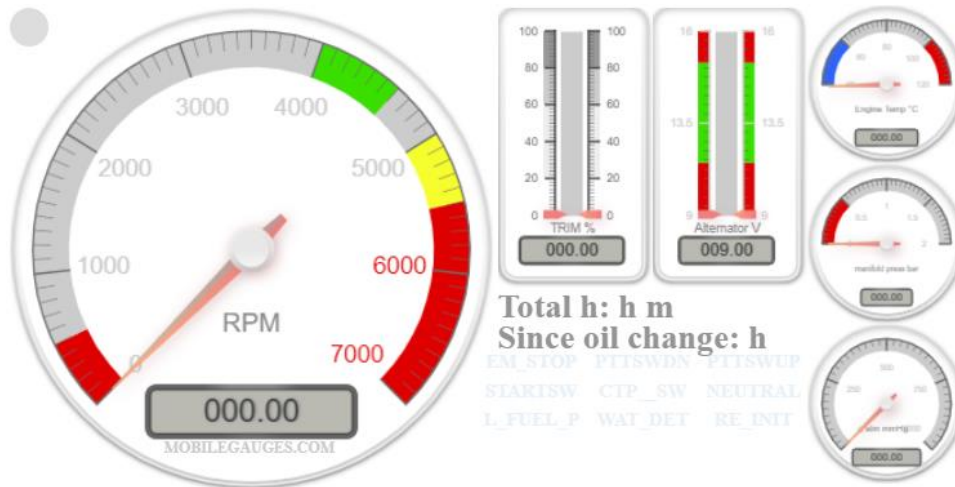
Hardware version V1.2.1

Firmware version V2.4

1. Introduction

Description

Marine Mobile Digital Gauges was designed to offer engine information directly on your mobile via Wi-Fi.



Available information is:

- RPM
- TRIM*
- WORKING HOURS
- HOURS LAPSED SINCE OIL CHANGE RESET
- GEAR*
- ALTERNATOR VOLTAGE
- MOTOR TEMPERATURE
- MANIFOLD PRESSURE
- ATMOSPHERIC PRESSURE
- SENSORS AND ERRORS*
- WATER PRESSURE*
- OIL TEMPERATURE*
- OIL PRESSURE*
- THROTTLE POSITION*

*check engine user manual if digital information is available. Some manufacturers offer this as an option so it might not be available by the motor output.

Features

- Small form factor 95 x 50 x 18 mm
- Waterproof for splashes and light rain
- Option for plug and play for supported engines
- Power consumption ~150mA @12V
- Range in open space up to 20m
- No maintenance needed
- Reverse polarity protection up to 30 sec reverse polarity connection
- 2.4GHz Wi-Fi connection
- Updates over Wi-Fi network

Package content:

1 x Marine Mobile Digital Gauge with 0.5m wire length

1 x User manual

1x Warranty form



Options by request to be included:

- plug and play connection to engine
- spare connector
- extra cable length
- customized display (can be done at any time by firmware update)

2. Wiring description

Marine Mobile Digital Gauges has a purple cable with default length of 0.5m, shorten or longer cable can be available by request. This cable is internally electrical shielded and there are two twisted pairs of cable: White - Brown/or/Blue and Yellow/or/Red – Green/or/Black.

Wire description:

White: VBAT

Brown: GND

Yellow and Green together: SIGNAL

3. Installation instructions

a. Installation of a generic Marine Mobile Digital Gauges

Identify on your engine the diagnostic connector

Marine Mobile Digital Gauges	Engine SDS connector
White : VBAT	VBAT
Brown : GND	GND
Yellow and Green: SIGNAL	SIGNAL

**please refer to engine user manual or to wiring diagram of your engine to identify the right connection points.

Before connecting we highly recommend measuring the power supply cabled with a voltmeter to make sure you have the right voltage source.

Make sure to secure cables to a rigid point in order to avoid vibration pulling out cables from the connector pins.

b. Installation of an engine type Marine Mobile Digital Gauges

If you purchased plug-n-play variant for a different type of motor, connections are already made on Marine Mobile Digital Gauges with proper connectors for your motor type.

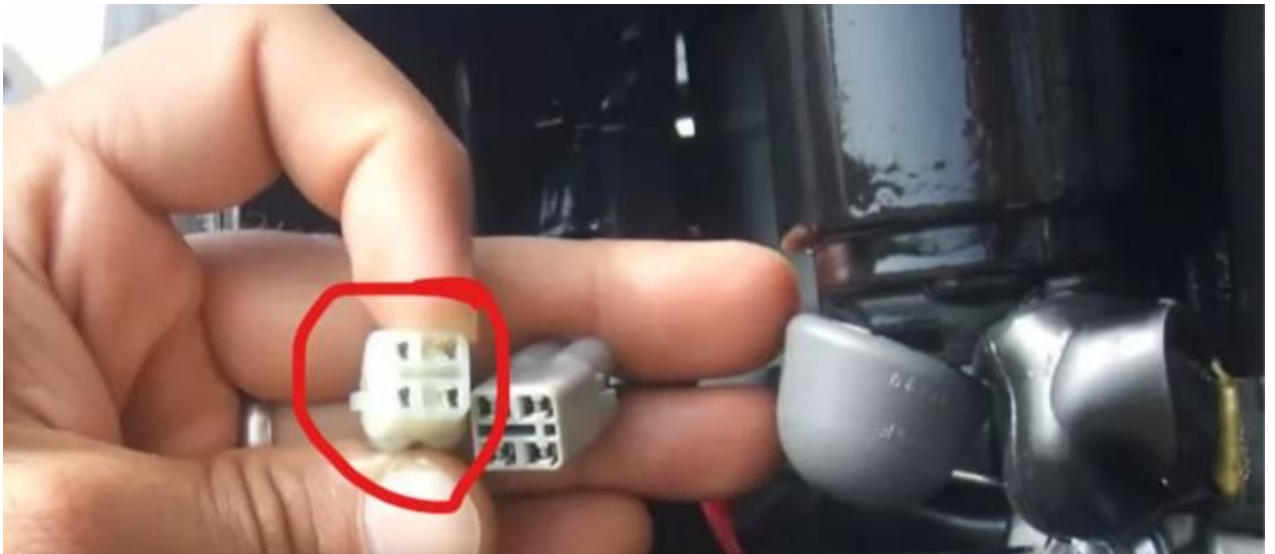
Identify on your motor the corresponding connectors, remove the dummy caps from those connectors and plug in Marine Mobile Digital Gauges thru the connectors provided.

We highly recommend to double check connections and to follow additional steps presented at point 3.a.

Make sure to secure cables to a rigid point in order to avoid vibration pulling out cables from the connector pins.

Final Installation dispositions: We **highly recommend installing** your Marine Mobile Digital Gauges at an authorized technician or service. Contact your dealer or manufacturer for a recommendation for technician or service even if you have a generic or plug-n-play version. Contact your dealer or manufacturer to help you step by step on the installation. Installation by yourself is possible and full responsibility of installation and operation is taken by you and dealer or manufacturer are not responsible for any problems occurring during these steps. Proof of installation at an authorized center or authorized person might be requested if any complains are made.

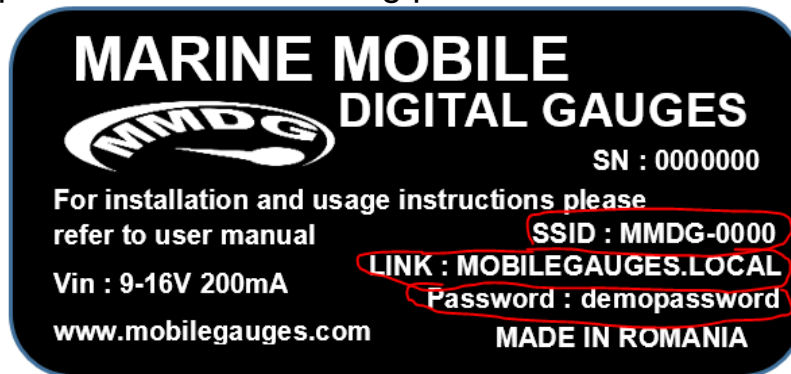
4. Suzuki connection



5. Operation description

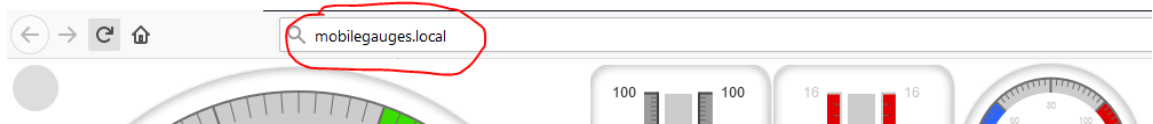
The device is needed to be connected to engine SDS diagnose connector.

- I. After correct connection to the engine, supply engine with power (you can apply power supply to the engine but **do not start your engine without water supplied to cooling system**, for correct operation of your engine refer to engine manufacturer use manual).
- II. connect via Wi-Fi with your mobile, laptop, tablet, or other devices with Wi-Fi capabilities, check your product label for SSID and password as in following picture:



- III. access the web address specified on the label of your product (<http://mobilegauges.local> or <http://192.168.4.1> you can simply type mobilegauges.local or 192.168.4.1 on browser) via a browser like Mozilla Firefox, Google Chrome, Opera, Mozilla, etc.(we highly recommend Mozilla Firefox).

<http://mobilegauges.local>

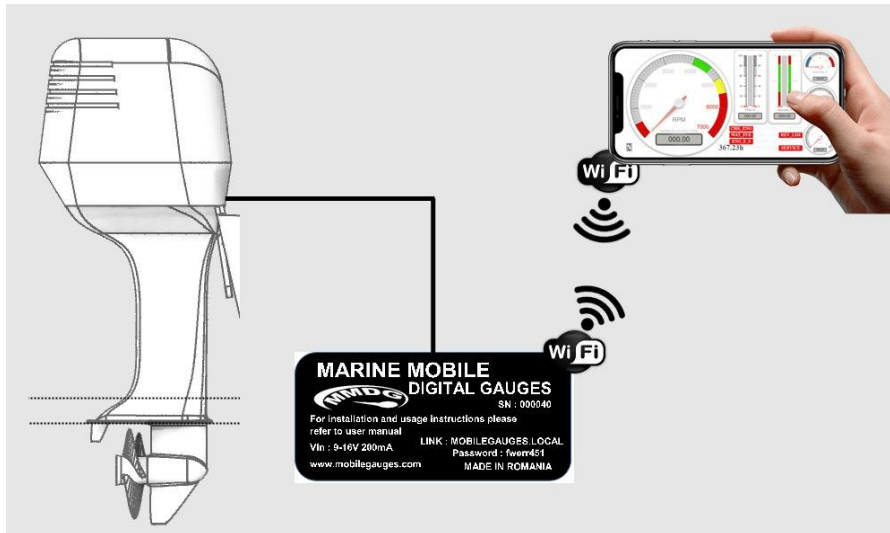


<http://192.168.4.1>



- IV. enjoy your new digital Marine Mobile Digital Gauges.

6. Connection architecture



7. Compatible Suzuki engines:

MODEL NAME	MODEL YEAR
DF9.9B/15A/20A	Serial number: 310001 and later
DF25A/30A	Serial number: 510001 and later
DF40/50	1999 and later
DF40A/50A	Serial number: 110001 and later
DF60A	2010 and later
DF60/70	1998 and later
DF70A/80A/90A	2009 and later
DF90/115	2001 and later
DF100	2009 and later
DF140	2002 and later
DF100A/115A/140A	Serial number: 310001 and later
DF150/175	2006 and later
DF150TG/ZG/175TG/ZG	Serial number: 410001 and later
DF200A	Serial number: 510001 and later
DF200AP	Serial number: 510001 and later
DF200/225/250	2004 and later
DF250S	2008 and later
DF300	2007 and later
DF250AP/300AP	Serial number: 310001 and later

Note: If you do not find your engine in the lists above please contact manufacturer, dealer or user support for checking if your engine is compatible or not with the Marine Mobile Digital Gauges.

8. Warranty Exemptions

Conditions disqualifying a product from Warranty include but are not limited to the following:

- Any defect caused by misuse, improper installation
- Any defect caused by software, virus or improper use of self-made and non-public software;
- Any product beyond the limited free replacement and repair period;
- Any unauthorized modification to the supporting setting files, or any authorized disassembly;
- Any defect caused by improper use in the working conditions beyond those stated in the literature (for example: working conditions that are too hot/cold, wet/dry; microwave exposure; instable electric current and voltage and so on)
- Any defect caused by personal disaster or improper maintenance, such as mechanical damage, serious oxidation and rusting, rat damage, over exertion and so on;
- Any defect caused by transportation or loading during returning voyage;
- Any natural disaster such as earthquake, fire, flood, thunder strike and so on;
- Any other defects that are not caused by workmanship, technique, product quality and the like;

Conditions that Disqualify Product from Warranty in the external power supply include:

- The returned power supply has obvious damage, fissure, broken legs, severe deformation;
- The returned power cord is broken, has naked core and damages like this.